

AW-CU300

IEEE 802.11 1X1 b/g/n Wireless LAN WLAN Microcontroller LGA Module

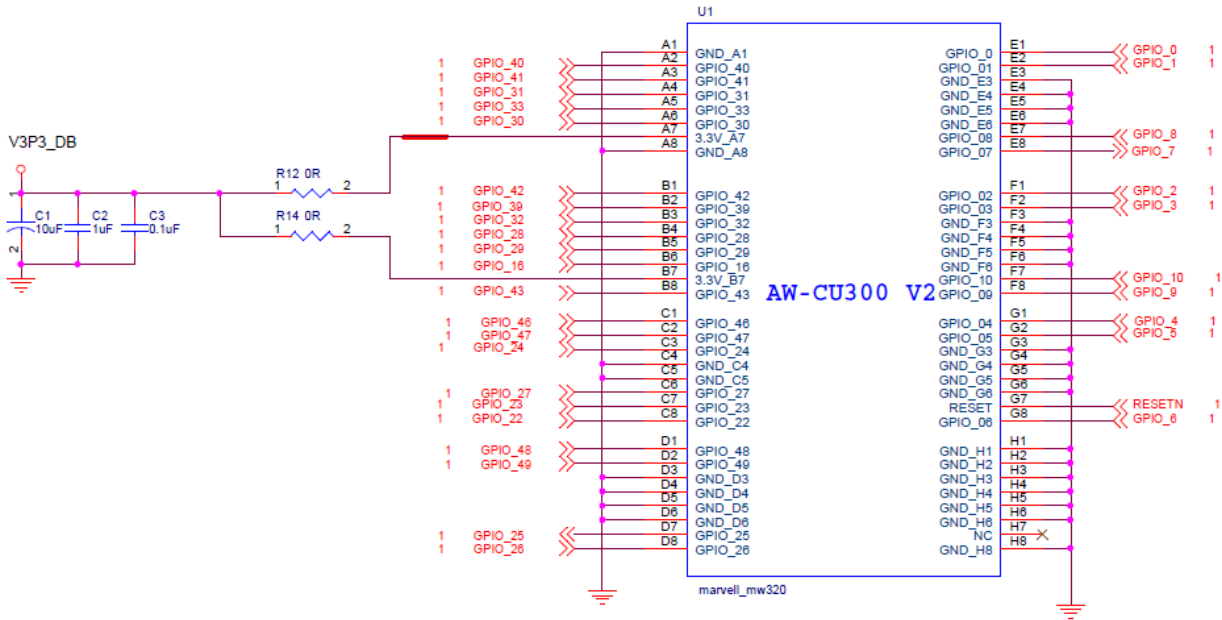
Reference Design Guide

Rev. A

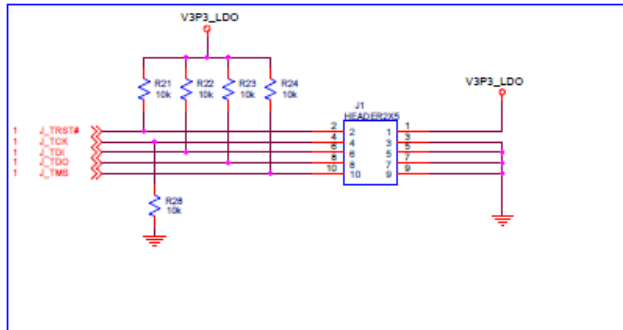
(For Standard)

Revision History

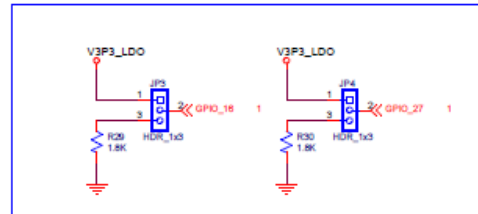
Version	Revision Date	Description	Initials	Approved
A	2020/4/23	● Initial Version	Renton Tao	N.C. Chen



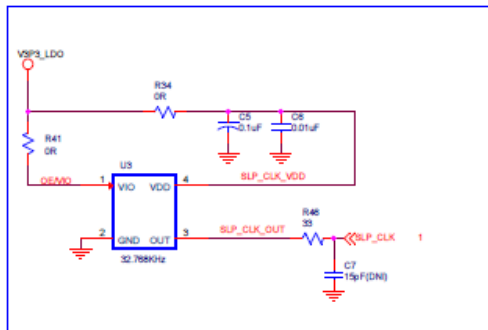
JTAG INTERFACE



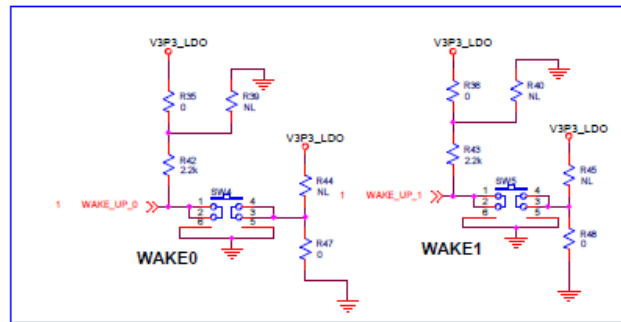
Boots option



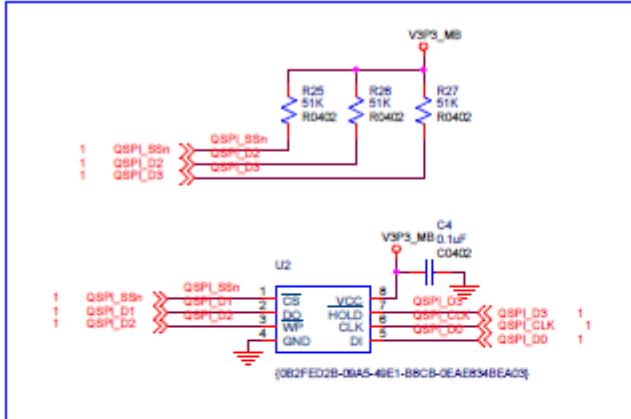
Sleeping Clock



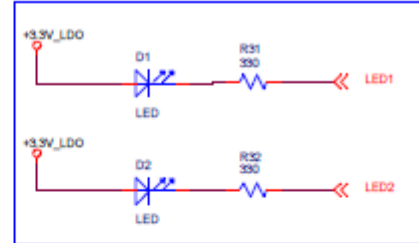
Wakeup by external



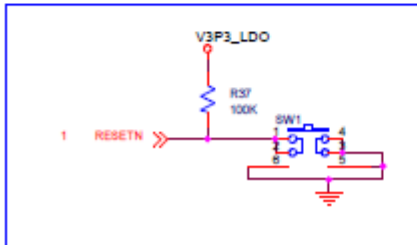
QSPI FLASH



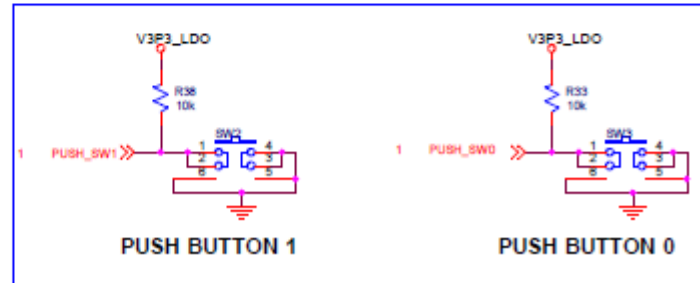
APPLICATION LEDs



System reset



PUSH BUTTON



GPIO	Function
GPIO_00	UART0_CTS
GPIO_01	UART0_RTS
GPIO_02	UART0_TXD
GPIO_03	UART0_RXD
GPIO_6	J_TDO
GPIO_7	J_TCK / UART2_CTS
GPIO_8	J_TMS / UART2_RTS
GPIO_9	J_TDI / UART2_TXD
GPIO_10	J_TRST# / UART2_RXD
GPIO_16	STRAP1
GPIO_22	WAKE0
GPIO_23	WAKE1
GPIO_24	PUSH_SW1
GPIO_25	32KHz_CLK_IN
GPIO_26	PUSH_SW0
GPIO_27	STRAP0
GPIO_28	QSPI_SS0
GPIO_29	QSPI_CLK
GPIO_30	QSPI_D0
GPIO_31	QSPI_D1
GPIO_32	QSPI_D2
GPIO_33	QSPI_D2
GPIO_40	LED1
GPIO_41	LED2